



*Or*

COMPANY  
PROFILE

ORNELLAGALLOART.COM  
ORNELLAGALLODESIGN.COM

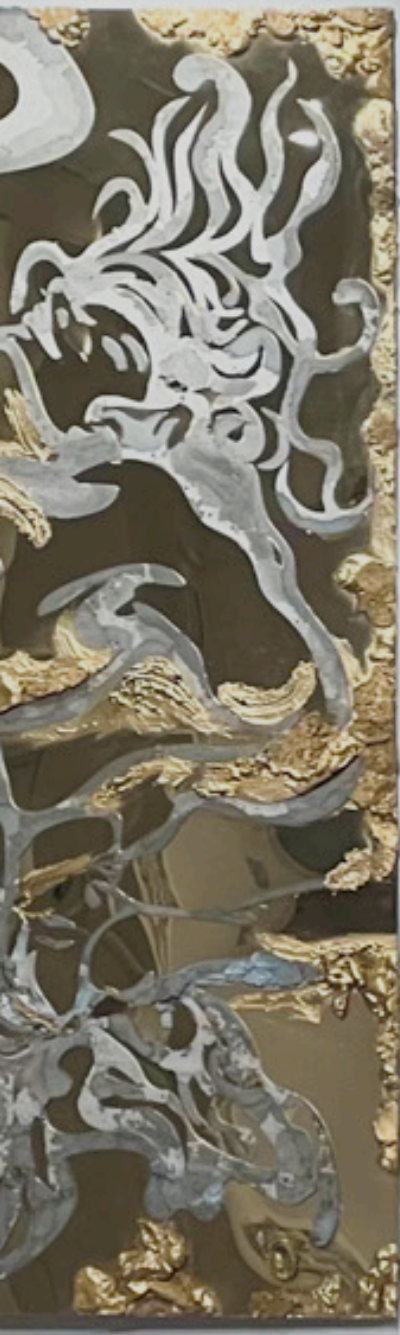


*Or*

ORNELLA GALLO DI FORTUNA  
ARTS & DESIGN

AT OUR ESSENCE, WE ARE ARTISTS AND ARTISANS, WEAVING NARRATIVES OF BEAUTY  
AND ELEGANCE THAT TRANSCEND TIME AND SPACE.  
WITH AN UNWAVERING COMMITMENT TO EXCELLENCE AND A PASSION FOR PUSHING ARTISTIC  
BOUNDARIES, WE INVITE YOU TO EMBARK ON A TRANSFORMATIVE JOURNEY WITH US,  
WHERE IMAGINATION KNOWS NO BOUNDS, AND EVERY CREATION IS A MASTERPIECE IN IT'S OWN  
RIGHT.

WELCOME TO A WORLD WHERE ARTISTRY MEETS CRAFTSMANSHIP, AND DREAMS  
BECOME REALITY. WELCOME TO OUR REALM OF ARTISTIC SPLENDOUR OUR CRAFT



# OUR CRAFT





COMPANY PROFILE

CRAFTING DREAMS INTO REALITY

AT OUR CORE, WE ARE MORE THAN A COMPANY; WE ARE THE ARCHITECTS OF DREAMS AND THE SCULPTORS OF IMAGINATION. LED BY CREATIVE DIRECTOR, ORNELLA GALLO, WE ARE A FUSION OF ART MANUFACTURING AND ARTISTIC ADVISORY EXCELLENCE.

WE ARE A MULTIDISCIPLINARY TEAM OF HIGHLY SKILLED ARTISTS, ARTISANS, AND SPECIALISTS, WORKING IN CLOSE COLLABORATION UNDER ONE DIRECTION CREATING AND MANUFACTURING SITE-SPECIFIC ARTWORKS EXCLUSIVE AND BESPOKE DECORATIVE FINISHES FOR SUPER YACHTS AND EXCEPTIONAL PROPERTIES ON LAND.





**THE VISION**

BETWEEN PRECISION AND SPONTANEITY LIES OUR CREATIVE LANGUAGE. A MEASURED TENSION BETWEEN ORDER AND ABSTRACTION WHERE INTUITIVE ARTISTRY MEETS MATERIAL INTELLIGENCE, AND WHERE EACH GESTURE IS RESOLVED THROUGH DISCIPLINE AND CONTROL. ENVIRONMENTS ARE NOT SIMPLY DESIGNED, BUT COMPOSED THROUGH DEPTH, LIGHT, AND SURFACE TO BE FELT AS MUCH AS THEY ARE SEEN.

**OUR MISSION**

TO WORK WITH CLIENTS WHO UNDERSTAND THE VALUE OF AUTHORSHIP, RARITY, AND MATERIAL TRUTH CREATING WORKS AND ENVIRONMENTS THAT CANNOT BE REPLICATED.



**OUR EXPERTISE**

FROM THE ART AND DESIGN STUDIO, IDEAS ARE TRANSLATED INTO MATTER.

EACH WORK BEGINS WITH MATERIAL EXPLORED, PUSHED, AND REFINED UNTIL IT REACHES A POINT OF CLARITY.

THE STUDIO OPERATES ACROSS AN EXTENSIVE AND CONTINUALLY EVOLVING RANGE OF PROCESSES, DEVELOPED THROUGH YEARS OF PRACTICE AND EXPERIMENTATION WHERE TECHNIQUE IS NOT PREDEFINED, BUT SHAPED IN RESPONSE TO EACH PROJECT.

EVERY PIECE BECOMES A CONVERGENCE OF PROCESS, INTUITION, AND PRECISION—WHERE CRAFTSMANSHIP IS NOT DECORATIVE, BUT STRUCTURAL TO THE OUTCOME.

A WIDER BODY OF WORK AND MATERIAL APPROACHES IS AVAILABLE UPON REQUEST, WITH A DEDICATED CATALOGUE SHARED FOR PRIVATE CONSULTATION.





**DIRECTION**

THE PRACTICE MOVES ACROSS LAND, SEA, AND AIR.

EACH PROJECT IS LED BY ORNELLA GALLO—AN ARTIST FIRST—WHOSE ORIGINS IN PAINTING CONTINUE TO INFORM EVERY SURFACE.

A BACKGROUND SPANNING FASHION, TEXTILES, AND INDUSTRIAL DESIGN BRINGS A REFINED SENSITIVITY TO STRUCTURE, TEXTURE, AND COLOUR—AND TO THE WAY MATERIALS EVOLVE OVER TIME.

EVERY COMMISSION IS APPROACHED AS AN INTERVENTION WITHIN ARCHITECTURE.

WE DO NOT APPLY ART ONTO SPACE. WE WORK WITHIN IT—SHAPING ENVIRONMENTS WHERE STRUCTURE AND ARTWORK EXIST IN QUIET, DELIBERATE DIALOGUE.



## THE STUDIO

NESTLED IN THE VIBRANT HEART OF LONDON, THE STUDIO SERVES AS A SPACE WHERE IDEAS ARE DEVELOPED, TESTED, AND BROUGHT INTO FORM. ROOTED IN ARTISTIC PRACTICE, IT IS HERE THAT CONCEPTS EVOLVE INTO TANGIBLE WORKS—SHAPING ENVIRONMENTS THAT ENGAGE THE SENSES AND CARRY A QUIET EMOTIONAL DEPTH.

WHILE BASED IN LONDON, THE STUDIO OPERATES INTERNATIONALLY, WITH A PRESENCE ACROSS SPAIN AND ITALY, EXTENDING ITS WORK ACROSS DIVERSE CULTURAL AND ARCHITECTURAL CONTEXTS.

THE STUDIO HOUSES AN EXTENSIVE AND CONTINUALLY EVOLVING LIBRARY OF MATERIALS AND SAMPLES, BUILT OVER TWO DECADES OF EXPERIENCE. ALONGSIDE THIS, A COMPREHENSIVE PHOTOGRAPHIC ARCHIVE AND A WIDE RANGE OF SAMPLE BOARDS SUPPORT THE DEVELOPMENT OF BESPOKE ARTWORKS AND FINISHES FOR RESIDENTIAL, COMMERCIAL, AND MARINE PROJECTS.

## THE ATELIER EXPERIENCE

CLIENTS ARE INVITED TO ENGAGE DIRECTLY WITH THE PROCESS—EXPLORING MATERIALS, TECHNIQUES, AND POSSIBILITIES, GUIDED BY A TEAM ABLE TO ADVISE WITH CLARITY AND PRECISION. A VISIT OFFERS INSIGHT INTO THE STUDIO'S METHODOLOGY, FROM INITIAL CONCEPT AND RAW MATERIAL TO THE FINAL EXECUTION.

WITHIN THE WORKSHOP, IDEAS ARE TRANSLATED INTO FORM THROUGH A MULTIDISCIPLINARY APPROACH. ARTISTS, DESIGNERS, ENGINEERS, AND SKILLED COLLABORATORS WORK TOGETHER UNDER ONE ROOF, GUIDED BY THE VISION OF THE LEAD ARTIST. ACROSS TECHNIQUES INCLUDING SCULPTURE, BAS-RELIEF, ILLUMINATED ART, VERRE ÉGLOMISÉ, AND POLISHED PLASTER, EACH PROJECT IS SHAPED THROUGH CRAFTSMANSHIP, MATERIAL UNDERSTANDING, AND CAREFUL ATTENTION TO DETAIL.

FROM THE ART STUDIO, EACH WORK EMERGES THROUGH A CONSIDERED BALANCE OF INNOVATION AND MAKING—WHERE PROCESS, MATERIAL, AND NARRATIVE COME TOGETHER IN A COHERENT AND REFINED EXPRESSION.



WHEN  
ART MEETS  
DESIGN



CONCRETE MIRRORS ARTWORK CLOSE UP



ORNELLA GALLO AT THE ART STUDIO & CONCRETE MATTERS ARTWORKS

**ART & DESIGN STUDIO**

WHEN ART MEETS DESIGN ENVIRONMENTS ARE DEFINED.

THE STUDIO CREATES BESPOKE WORKS WHERE ARTISTIC VISION AND TECHNICAL PRECISION ARE RESOLVED INTO A SINGLE, COHERENT EXPRESSION.

MATERIAL, PROCESS, AND ARCHITECTURE ALIGN—SHAPING ENVIRONMENTS THAT ARE BOTH CONSTRUCTED AND FELT.

**HOW WE WORK**

EACH PROJECT BEGINS WITH A CONVERSATION AND DEVELOPS THROUGH A PROCESS OF EXPLORATION, TESTING, AND REFINEMENT.

CONCEPT, DESIGN, PROTOTYPING, PRODUCTION, AND INSTALLATION ARE APPROACHED AS A CONTINUOUS SEQUENCE WHERE DECISIONS ARE INFORMED EQUALLY BY ARTISTIC INTENT AND TECHNICAL UNDERSTANDING.

BECAUSE CREATION HAPPENS IN-HOUSE, THE STUDIO MAINTAINS CONTINUITY BETWEEN VISION AND EXECUTION ALLOWING IDEAS TO EVOLVE WITHOUT DILUTION.

WE OPERATE WORLDWIDE, ACROSS PROJECTS OF VARYING SCALE AND COMPLEXITY. ALONGSIDE OUR IN-HOUSE EXPERTISE, WE HAVE DEVELOPED LONG-STANDING COLLABORATIONS WITH LEADING SPECIALISTS IN MANUFACTURING, TECHNOLOGY, AND CRAFTSMANSHIP, EXTENDING BOTH OUR SCOPE AND CAPABILITIES.



L A N D



LAND

ARTISTIC INTERIORS & BESPOKE ARTWORKS

OUR WORK ON LAND IS EXPRESSED THROUGH THE CREATION OF SITE-SPECIFIC ARTWORKS AND INTEGRATED INTERIOR ELEMENTS, DEVELOPED IN RESPONSE TO EACH ARCHITECTURAL CONTEXT.

THIS INCLUDES LARGE-SCALE MURALS, ARCHITECTURAL BAS-RELIEFS, SCULPTURAL FEATURES, AND BESPOKE WALL FINISHES—ALONGSIDE DECORATIVE PANELS AND GILDED SURFACES. THROUGH INTERIOR COUTURE, THE LANGUAGE OF FASHION IS TRANSLATED INTO REFINED INTERIOR APPLICATIONS, BRINGING MATERIAL RICHNESS AND DETAIL INTO SPATIAL FORM



ORNELLA GALLO COPPER FINISHING TOUCHES BRUSHTROKES



BRUSHTROKES INSTALLED AT MAINFRAME LONDON

LAND

MATERIAL EXPRESSION

ON LAND, MATERIAL IS APPROACHED AS A FOUNDATION—ANCHORED, TACTILE, AND ENDURING. SURFACES ARE DEVELOPED THROUGH A CLOSE DIALOGUE BETWEEN ART AND ARCHITECTURE, WHERE HAND-CRAFTED FINISHES, SCULPTURAL ELEMENTS, AND LAYERED TEXTURES DEFINE THE SPATIAL EXPERIENCE.

EACH INTERVENTION IS SHAPED WITH A SENSE OF PERMANENCE AND PRESENCE, BALANCING ARTISTIC EXPRESSION WITH TECHNICAL PRECISION. MATERIALS ARE SELECTED AND COMPOSED TO CREATE DEPTH, RHYTHM, AND ATMOSPHERE—RESULTING IN ENVIRONMENTS THAT FEEL GROUNDED, IMMERSIVE, AND QUIETLY POWERFUL.

An aerial photograph of a mosaic floor. The mosaic is composed of small, irregular tiles in various shades of blue, teal, and grey. The tiles are arranged in a pattern that suggests a large-scale design, though the details are obscured by the high angle and the texture of the mosaic. Overlaid on the center of the image is the word "SEVA" in a clean, white, sans-serif font. The letters are spaced out horizontally across the middle of the frame. The lighting is even, highlighting the different colors and textures of the mosaic tiles.

S

E

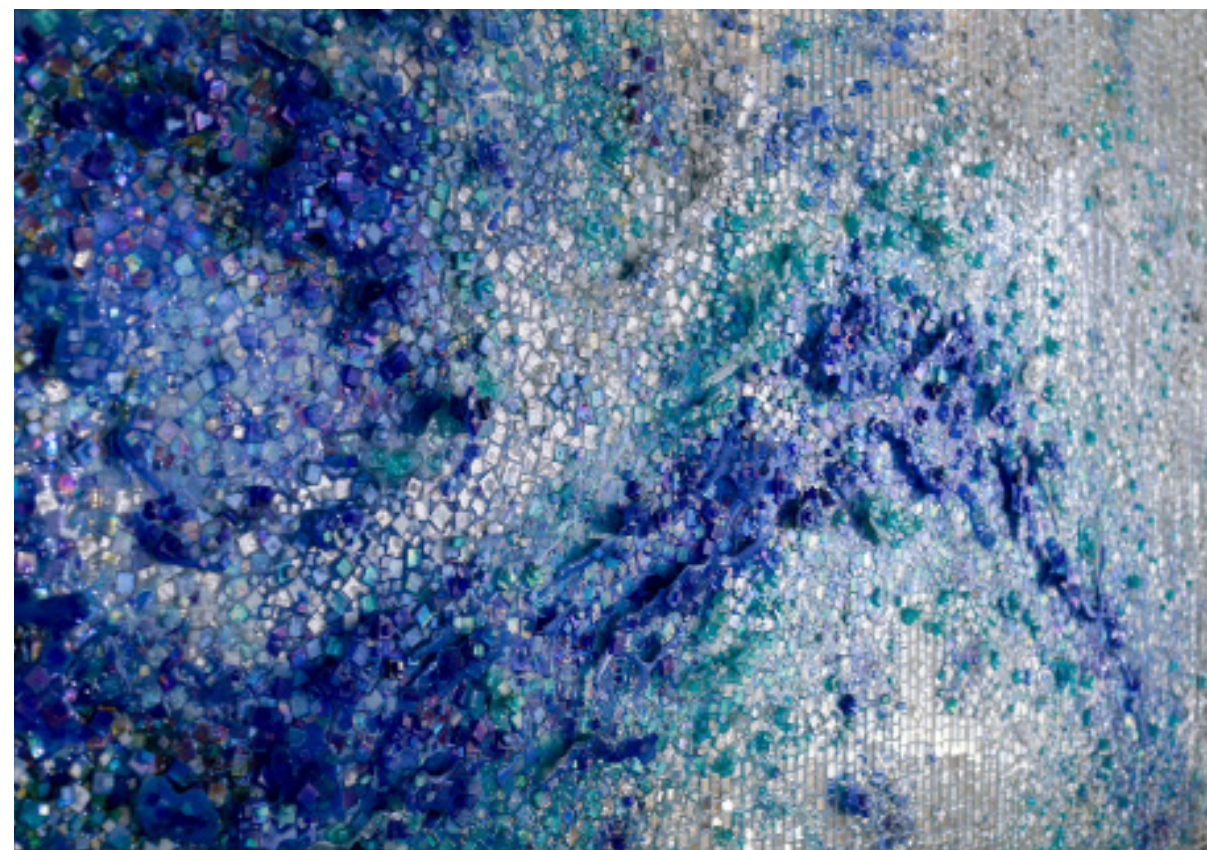
A







BIG WAVE - MOSAIC GLASS AND MIRROR ON BOARD OF 46M YACHT



BIG WAVE - CLOSE UP ARTWORK - 3D MOSAIC GLASS AND MIRROR

**ART ON BOARD  
BIG WAVE**

BEING AT THE FOREFRONT OF CONTEMPORARY MOSAIC ARTISTRY, OUR STUDIO PRESENTS BIG WAVE — A BESPOKE COMMISSIONED ARTWORK DESIGNED FOR THE MAIN LIVING AREA OF A 46-METER SUPERYACHT.

MEASURING 250 CM BY 150 CM, THIS UNIQUE PIECE IS COMPOSED OF INTRICATE GLASS AND MIRROR MOSAICS APPLIED OVER A SCULPTED THREE-DIMENSIONAL SURFACE.

INSPIRED BY THE PERPETUAL MOVEMENT OF WATER, BIG WAVE CAPTURES THE RHYTHM AND REFLECTIONS OF THE SEA IN A REFINED AND ABSTRACT EXPRESSION. THROUGH INNOVATIVE REINTERPRETATIONS OF TRADITIONAL MOSAIC TECHNIQUES, THE ARTWORK EXPLORES FLUIDITY, LIGHT, AND TEXTURE — ECHOING THE PLAY OF WATER, SPLASHES, AND SHIMMERING REFLECTIONS IN A DYNAMIC VISUAL DIALOGUE.

UNDERSTANDING THE SPECIFIC DEMANDS OF THE YACHT ENVIRONMENT, EVERY ASPECT OF BIG WAVE WAS CAREFULLY CONCEIVED TO ENSURE SEAMLESS INTEGRATION WITHIN ITS ARCHITECTURAL SETTING. EACH ELEMENT WAS CRAFTED TO MEET PRECISE TECHNICAL AND MATERIAL SPECIFICATIONS, WITH BESPOKE SOLUTIONS FOR STRUCTURE, FIXING, AND FINISH TO ENSURE RESILIENCE AND LONGEVITY AT SEA.

FROM INITIAL CONCEPT TO FINAL INSTALLATION, BIG WAVE EMBODIES THE STUDIO'S COMMITMENT TO EXCEPTIONAL CRAFTSMANSHIP, INNOVATION, AND THE HARMONIOUS FUSION OF ART AND ENVIRONMENT.

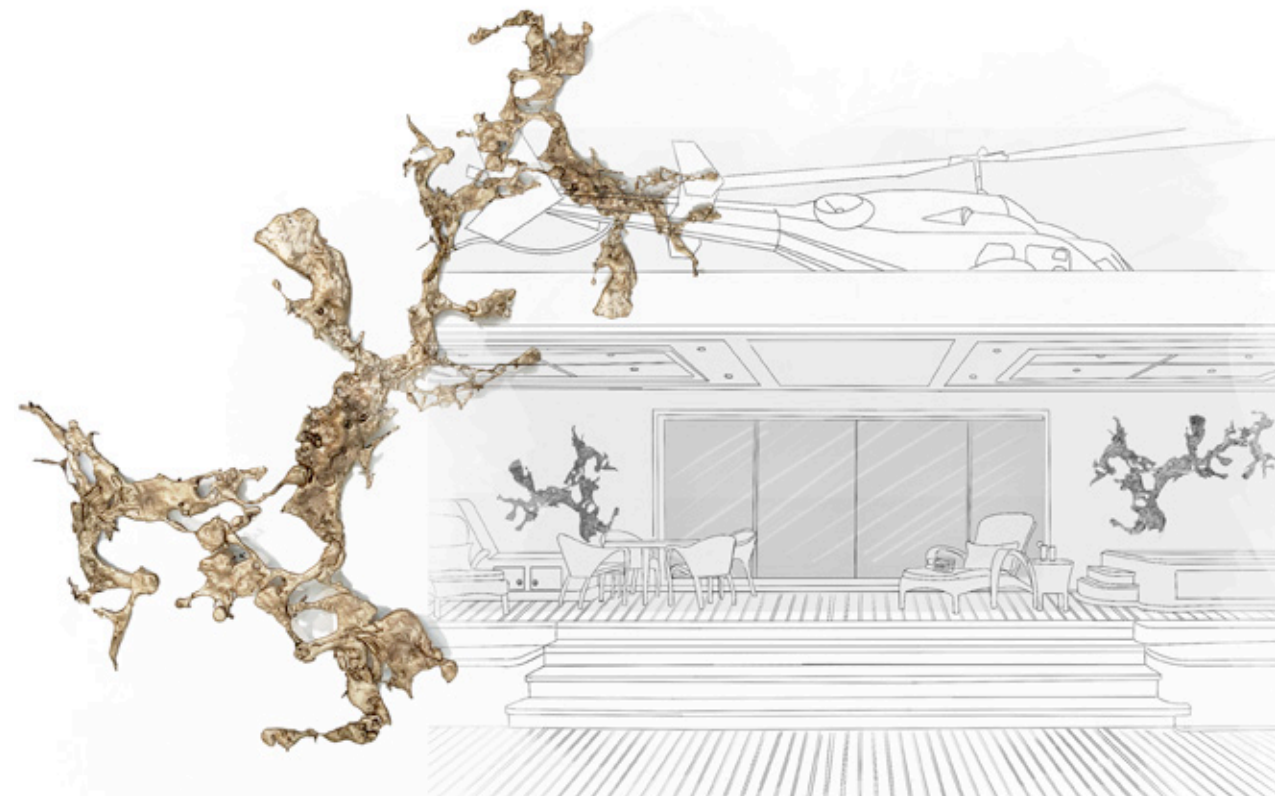




SPLASH! BRONZE AT THE STUDIO 2021



SPLASH! ARTWORK - MAKING OF DESIGN PROCESS



SKETCH OF PLACEMENT OF SPLASH! LIGHTING ON AFT

**SUPERYACHT INTERIORS & MARINE ART**

**INTEGRATION**

WORKS ARE CONCEIVED TO RESPOND— TO REFLECTION, TO MOTION, TO ATMOSPHERE—WHILE MEETING THE TECHNICAL DEMANDS OF THE MARINE ENVIRONMENT.

GLASS, METAL, AND COMPOSITE SURFACES ARE DEVELOPED AND ENGINEERED WITH- IN THE STUDIO—ENSURING DURABILITY WITHOUT COMPROMISING CLARITY.

EACH DETAIL — FROM INSTALLATION SYS- TEMS TO FINISH DURABILITY — IS ENGI- NEERED IN DIALOGUE WITH SHIPBUILDERS, DESIGNERS, AND CRAFTSMEN, ENSURING AESTHETIC CONTINUITY AND TECHNICAL PERFECTION.

**MATERIAL EXPRESSION**

AT SEA, MATERIAL IS SHAPED BY MOVE- MENT, REFLECTION, AND LIGHT. , EACH SURFACE IS DEVELOPED WITH A SENSITIV- ITY TO WEIGHT, DURABILITY, AND PER- FORMANCE, WHILE MAINTAINING A RE- FINED AND EXPRESSIVE QUALITY.

FINISHES ARE COMPOSED TO RESPOND TO THE SHIFTING CONDITIONS OF THE MARINE ENVIRONMENT—WHERE LIGHT, TEXTURE, AND REFLECTION INTERACT CONTINUOUSLY. THE RESULT IS AN INTE- RIOR LANGUAGE THAT FEELS FLUID AND BALANCED, WHERE CRAFTSMANSHIP AND ENGINEERING COME TOGETHER IN QUIET HARMONY.





MAKING OF - ODE TO MATISSE MOSAICS

## MOSAICS

### THE CUT-OUTS OF MURANO GLASS MURALS

WE HAVE BEEN COMMISSIONED TO MAKE A SERIES OF ARTWORKS TO DEVELOP AND MANUFACTURE 7 LARGE SCALE ARCHITECTURAL MURALS OF MOSAICS.

THE CONCEPT WAS TO GET INSPIRED BY THE GREAT ARTIST MATISSE AND HIS CUT-OUTS BUT TRANSFORM THEM IN A WAY THAT THE MATERIAL OF THE ART WAS THE MAIN POINT OF ATTENTION.

WE CHOSE FOR HIS DURABILITY AND CRAFT HAND MADE MURANO GLASS MANUFACTURED IN ITALY,

THE FINISHED PROJECT IS INSTALLED IN A PRIVATE RESIDENCE SEYCHELLES







A

I

R







# F A C T O R Y

# A R T





FOSSIL ARTWORK MODEL - LIQUID METALS

**FOSSILS**

**YEAR**  
2016

**THE BRIEF**

CREATE A BASS RELIEVE ARTWORK IN-  
SPIRED ON THE MARINE LIFE TO, CREATE  
THIS ON LARGE SCALE. APPLIED THEN TO  
ONE ROOM OF A PROPERTY

**DIMENSIONS**  
VARIABLE

**TECHNIQUES**

3D SCANS- CONCRETE MOULDS - PLASTER  
AND LIQUID METALS

**ARTS & CRAFTS**

LONG OBSESSED WITH THE NOTION OF  
CAPTURING AND FREEZING A MOMENT IN  
TIME,  
THE ORGANIC FOSSIL COLLECTION IS  
BUILT ON MAKING SURFACES THAT  
REALLY INTEREST US AS ARTISTS.  
CREATED BY USING HANDS-ON PROCESS-  
ES TO CREATE FINISHES OF LIQUID METAL  
INSPIRED BY ELEMENTAL MATERIALS.  
OUR PANELS ARE TACTILE AND SCULPTUR-  
AL, REVEALING REFERENCES TO ART,  
HISTORY, ARCHITECTURE AND NATURAL  
FORMS



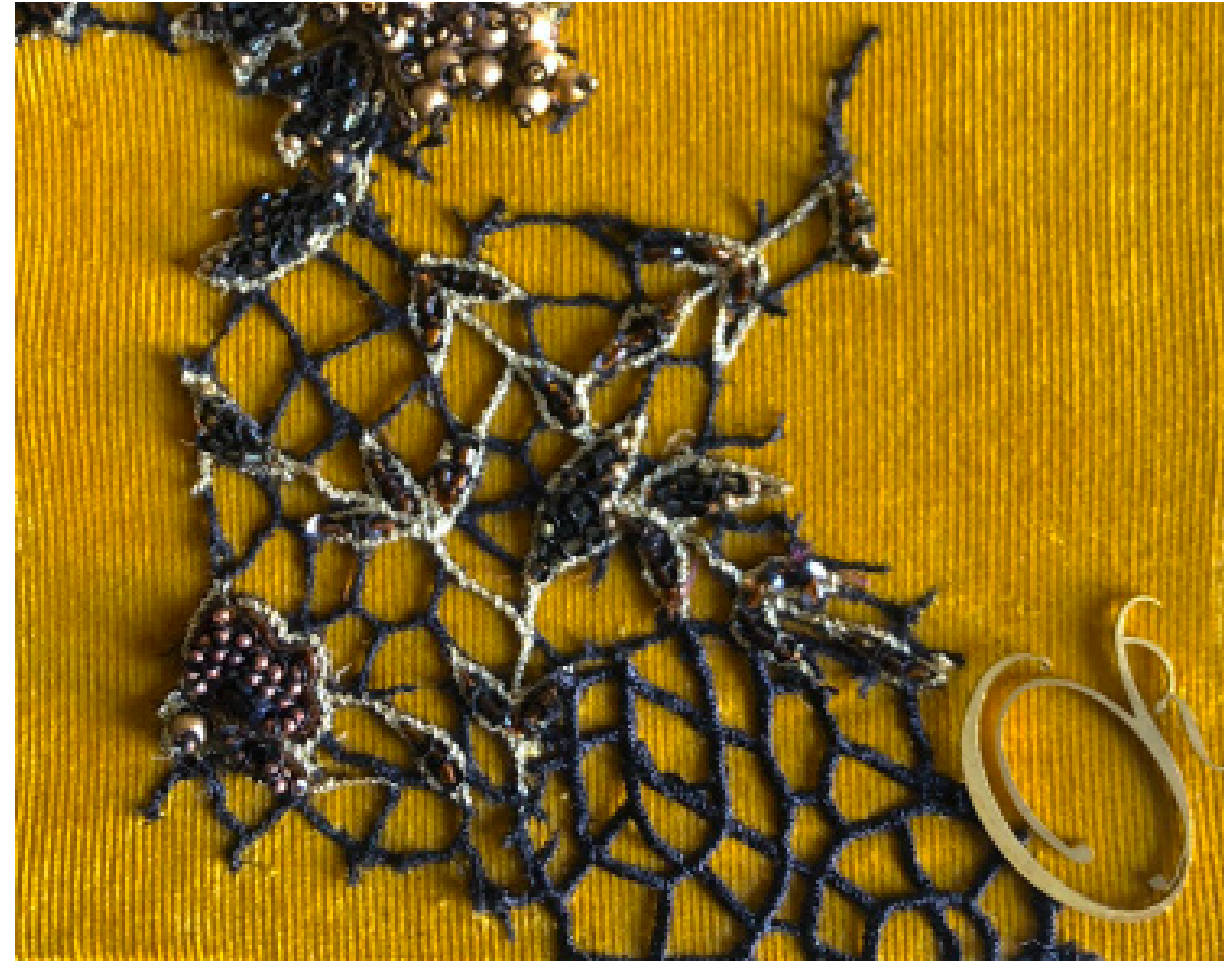
FOSSIL ARTWORK LIQUID METALS ON BOARD



ART COUTURE



HAND PAINTED SUEDE WITH EMBROIDERY



EMBROIDERY APPLICATION FOR BESPOKE COLLECTION OF ARMCHAIRS



ICEBREAKER ARTWORK DETAIL - ALUMINIUM AND BRONZE ON VELVET

**ART COUTURE**

BRINGS THE DISCIPLINE OF HAUTE COUTURE INTO THE LANGUAGE OF INTERIORS. THROUGH EMBROIDERY, PATTERN-MAKING, HAND-CRAFTED DETAILING, AND HAND-PAINTED WALLPAPERS, EACH ELEMENT IS DEVELOPED INTO BESPOKE PANELS, TEXTILES, AND FURNITURE—WHERE SPACES ARE CONCEIVED AS WEARABLE WORKS OF ART.



# WALLPAPERS



SHUNGA OR-G WALLPAPER INSTALLED



ELLE DECORATION UK MAGAZINE FEATURING SHUNGA WALLPAPER CHICAGO PROJECT



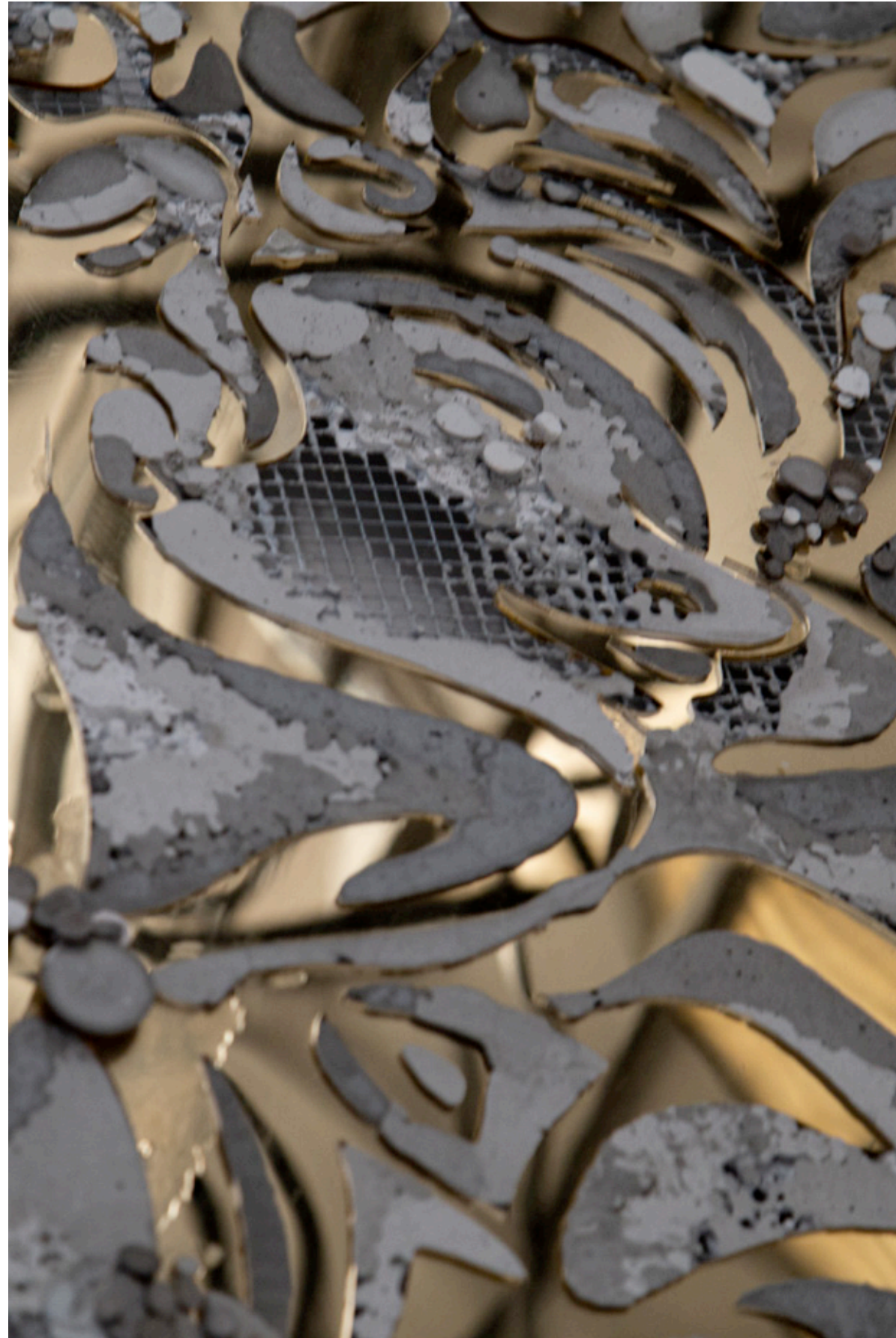
SHUNGA WALLPAPER COLLECTION INSTALLED



SHUNGA 8M ARTWORK CARTOON SKETCH FOR TAPESTRY







INSTALLATION OF MARINE WONDERS ARTWORK ON A 95M EXPLORER

**MATERIAL WORLD**

**ELEVATING YACHT SPACES WITH BESPOKE CREATIONS**

ARTWORKS WERE SEAMLESSLY INTEGRATED INTO STRUCTURAL ELEMENTS USING SPECIALIZED SEA-FASTENINGS. AN EXAMPLE IS THE FUSED GLASS ART INSTALLATION CUSTOM-MADE FOR A SPECIFIC WALL PANEL, SHOWCASING ADVANCED MATERIAL TECHNIQUES.

**HIGHLIGHTING MATERIAL MASTERY**

EACH ARTWORK INCORPORATED EXQUISITE MATERIALS, SUCH AS THE HAND-APPLIED GOLD LEAF PANELS FOR THE STAIRWELL, & AN EMBROIDERED SILK FEATURE ARTWORKS FOR THE CABIN HEADBOARDS



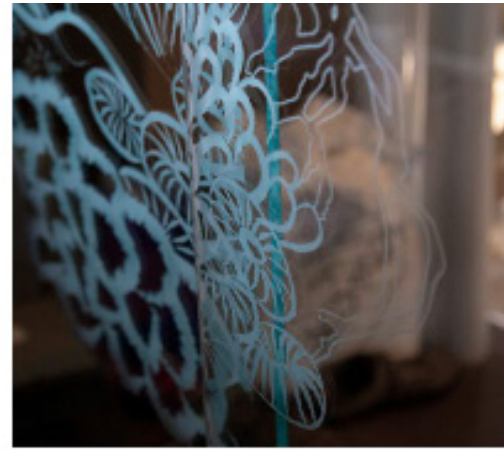
AURA FOREST ARTWORK DETAIL



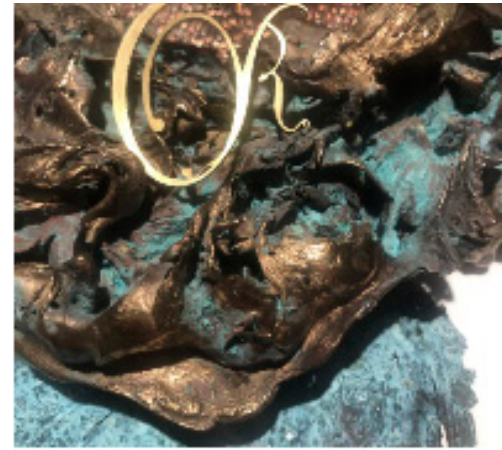
# ART TECHNIQUES



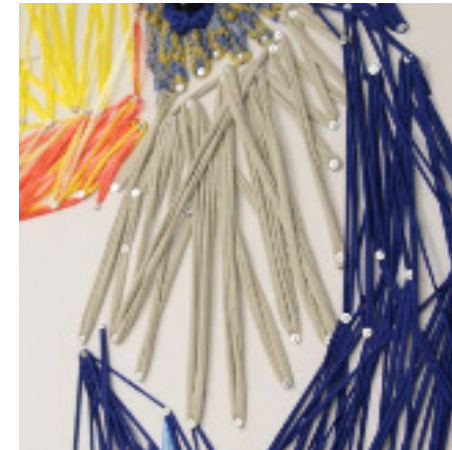
METALS AND CANVAS & PAINT



HAND PAINTED ACID ETCH & VERRE ÉGLOMISÉ



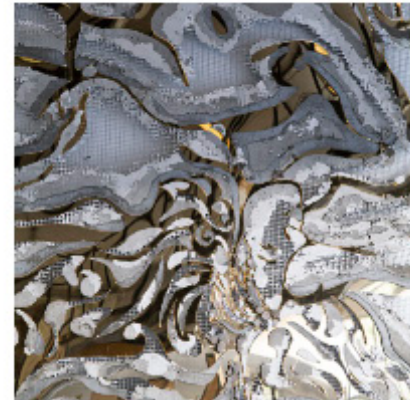
BRONZE



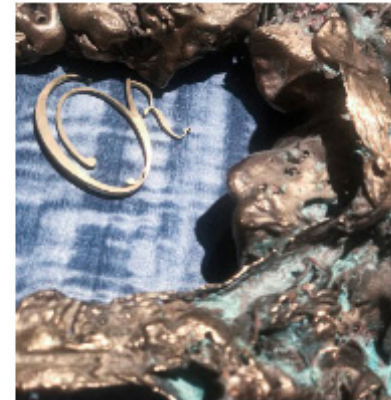
EMBROIDERY WALLS & INSULATION PANELS



BESPOKE ARTWORKS



SURFACE DESIGN DECORATION



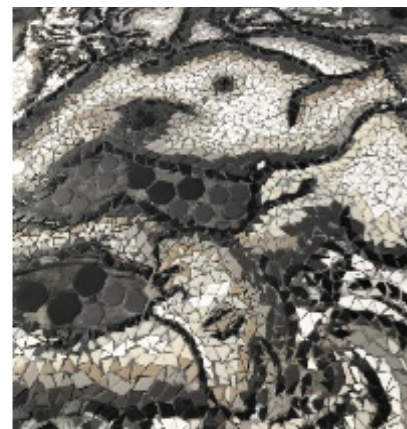
WOOD AND LIQUID BRONZE



FINE ART TECHNIQUES



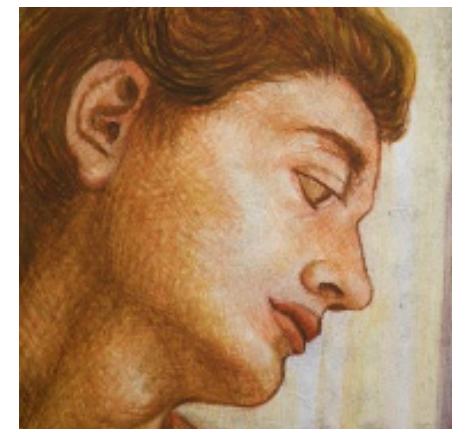
BASS RELIEF SCULPTURE



MOSAICS



LEATHER FINISHES



MURAL AND FRESCOS

FINISH

ARTISTIC SURFACES FOR ARCHITECTURAL INSTALLATIONS AND DECORATIVE ART

WE USE THE LATEST LIQUID METAL TECHNOLOGY TO CREATE BESPOKE INTERIOR AND EXTERIOR FINISHES. OUR INNOVATIVE PRODUCTS AND YEARS OF EXPERIENCE ALLOWS US TO COAT A WIDE RANGE OF SURFACES WITH A SOLID COATING OF METAL. THE LIQUID METAL FINISH CAN BE POLISHED, BRUSHED, TEXTURED AND / OR AGED, USING OUR INCREDIBLE RANGE OF PATINAS AND WASHES, WE CAN CREATE THE EFFECTS OF AGEING, OXIDATION AND DEPTH.

OUR ART WALLS ARE CHARACTERIZED BY PIONEERING INNOVATIVE TECHNIQUES THAT BLEND MODERN TECHNOLOGIES WITH THE REVIVAL OF ANCIENT CRAFTS AND THE UTILIZATION OF DIVERSE NATURAL MATERIALS.

AS SPECIALISTS IN VARIOUS ART FORMS, WE INFUSE EACH PROJECT WITH ORIGINAL IDEAS RESULTING IN TRULY ONE-OF-A-KIND FEATURE WALLS. WITH A FOCUS ON CRAFTING TEXTURED LIQUID METAL AND PIGMENTED POURED PANELS, CONCRETE, AND MIRRORS OUR PASSION LIES IN ELEVATING TRADITIONAL MATERIALS TO CREATE EXQUISITE TACTILE SURFACES, WHETHER IN THE FORM OF PANELS, FURNITURE FINISHES, OR ARTWORKS.

WORKING WITH A WIDE RANGE OF MATERIALS, INCLUDING LIQUID METAL, TIMBER, PLASTER, LIMESTONE, AND RESIN, WE ENHANCE INTERIORS, EXTERIORS, SUPER YACHTS, AND MORE.

OUR STATE-OF-THE-ART WORKSHOP ENABLES US TO METICULOUSLY CRAFT BESPOKE, UNIQUE SURFACES, AS WELL AS SCALABLE SOLUTIONS TAILORED TO MEET THE DEMANDS OF COMMERCIAL PROJECTS.

WE TAKE IMMENSE PRIDE IN DELIVERING UNPARALLELED CRAFTSMANSHIP THAT EXUDES QUALITY AND ORIGINALITY, WHETHER IT'S A DISTINCTIVE MASTERPIECE OR A LARGE-SCALE ENDEAVOUR.

OUR MATERIALS ADORN SPACES WORLDWIDE, LEAVING AN INDELIBLE MARK OF SOPHISTICATION ON EACH DESIGN.

FOR EVERY ART WALL, OUR ATELIER THOUGHTFULLY CURATES A SELECTION OF TECHNIQUES THAT PERFECTLY COMPLEMENT THE PROJECT'S UNIQUE CONTEXT.



T E A M  
&  
P A R T N E R S





**ORNELLA GALLO DI FORTUNA  
CREATIVE DIRECTOR**

ARTIST AND DESIGNER, ORNELLA GALLO DI FORTUNA MAKES POWERFULLY TACTILE AND ORGANIC ART, FURNITURE, LIGHTING, WALL COVERINGS AND ACCESSORIES. HIS DESIGNS ARE ROOTED IN TOUCH.

WORKING WITH LUXURIOUS MATERIALS SUCH AS LEATHER, SILKS, LACQUER, BRONZE, GESSO, PARCHMENT, CONCRETE AND MIRRORS. ORNELLA'S CREATIONS AIMS TO UNDERSCORE WHAT IS SPECIAL, RARE AND PRECIOUS ABOUT EACH ONE OF HIS CREATIONS. INSPIRATION FOR THE DESIGNER COMES FROM MANY SOURCES: FROM AN OBJECT OF THE PAST, FROM NATURE, FROM ARCHITECTURE, SCULPTURE AND FASHION, FROM THE MATERIALS THEMSELVES.

SHE FIRMLY BELIEVE THAT DESIGN AND ART SHOULD NOT BE LIMITED TO A SINGLE EXPRESSION. INSTEAD, WE EMBRACE A DIVERSE VOCABULARY DERIVED FROM A RIGOROUS PHILOSOPHY AND INSPIRED BY VARIOUS SOURCES.

INFUSED SPACES WITH LIFE BY UNCOVERING STORIES, CELEBRATING TRADITIONS, AND REIMAGINING SYMBOLS. EVERY DESIGN WE CONCEIVE, WHETHER IT'S AN OBJECT, A SPACE, OR A BOAT, IS BUILT UPON A NARRATIVE FOUNDATION.

OUR CREATIONS BRING TOGETHER THE PAST, PRESENT, AND FUTURE, FUSING RESPECT FOR HISTORY, MATERIALS, AND TECHNIQUES WITH A CONTEMPORARY FOCUS.

DRAWING INSPIRATION FROM THE TWISTS AND IMPERFECTIONS OF NATURE, WE EMBRACE A NATURALIST APPROACH. WE HONOUR NATURAL MATERIALS, CRAFTSMANSHIP, AND THE INTEGRATION OF NEW TECHNOLOGIES AS A CATALYST FOR EVOLUTION.

WE DESIGN OBJECTS AND SPACES THAT ARE MEANT TO BE UTILIZED AND ENDURE, CELEBRATING THE BEAUTY THAT ARISES WITH THE PASSAGE OF TIME AND USE, RATHER THAN AIMING FOR UNTOUCHABLE PRECIOUSNESS. WE ASPIRE FOR OUR DESIGNS, OBJECTS, AND ART TO TRANSCEND OUR LIFETIMES.

WE WHOLEHEARTEDLY EMBRACE AND SEEK BEAUTY, RECOGNIZING ITS PRESENCE IN THE HUMBLEST AND GRANDEST ASPECTS OF LIFE. WE BELIEVE THAT DESIGN POSSESSES THE POWER TO ELEVATE THE MUNDANE AND MAKE IT EXTRAORDINARY.

ORNELLA GALLO DI FORTUNA ART & DESIGN BRINGS TOGETHER OVER TWO DECADES OF DESIGN EXPERIENCE IN THE UK, EUROPE, AND LATIN AMERICA, OFFERING CLIENTS A COMPREHENSIVE SERVICE. OUR GOAL IS TO CREATE SERENE, BEAUTIFUL SPACES THAT INSPIRE, EMBODY SOPHISTICATED, AND CELEBRATE ARTISTRY.



**ASSOCIATED COMPANIES & PARTNERS**

**ORNELLA GALLO ART**  
 CREATIVE DIRECTION- ART CREATION AND MANUFACTURING, ART INSTALLATIONS  
 DEDICATED TO THE CONCEPTION AND PRODUCTION OF ORIGINAL ARTWORKS AND INSTALLATIONS. THE STUDIO OFFERS BESPOKE ART PIECES FOR PRIVATE COLLECTIONS, PUBLIC SPACES, AND LUXURY INTERIORS.  
 ORNELLAGALLOART.COM

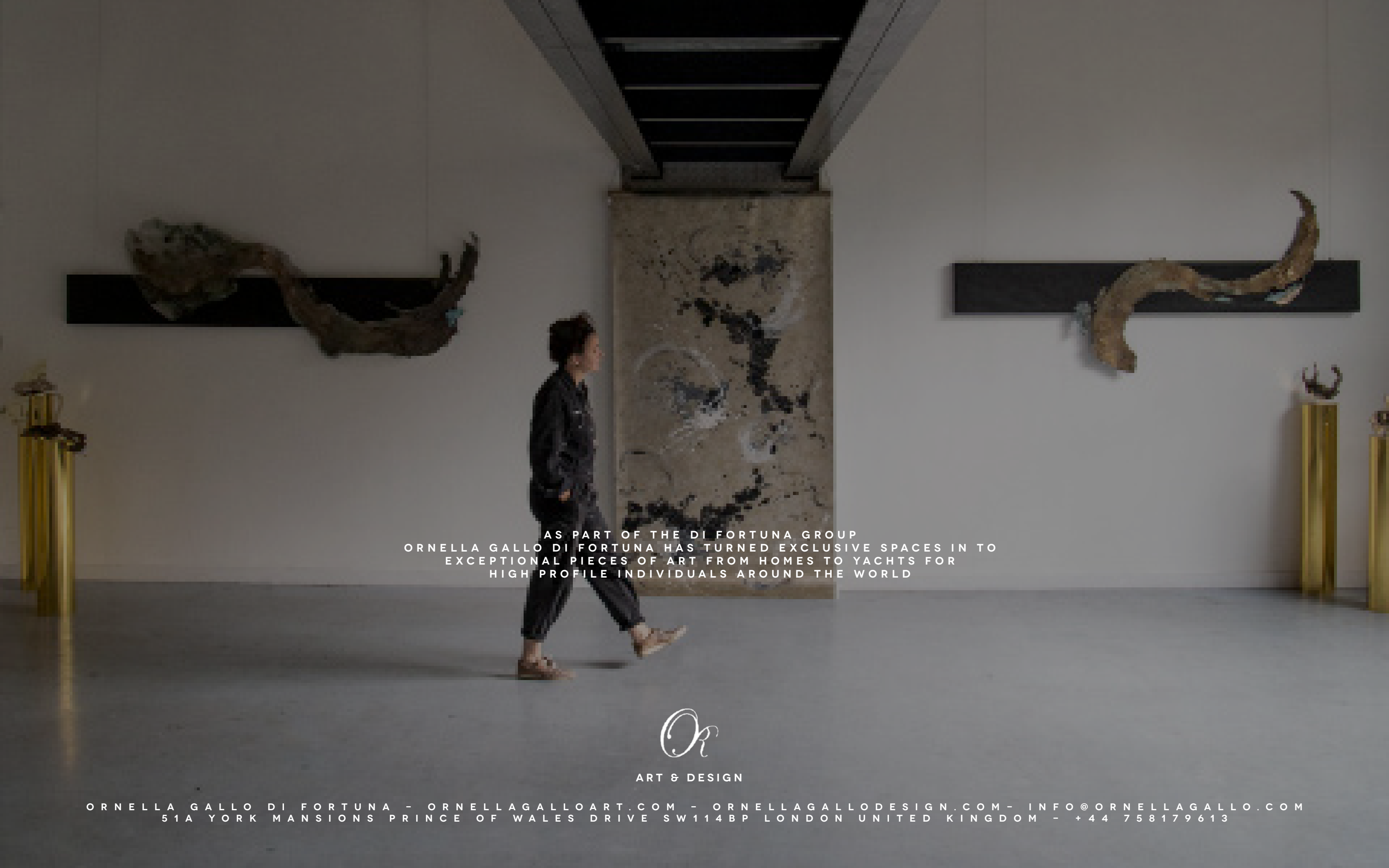
**ORNELLA GALLO DESIGN**  
 INTERIOR DESIGN LAND - SEA -AIR-INTERIOR STYLING  
 A MULTIDISCIPLINARY DESIGN PRACTICE SPECIALIZING IN LUXURY INTERIORS FOR RESIDENTIAL, COMMERCIAL, MARINE, AND AVIATION ENVIRONMENTS. COMBINING FUNCTIONALITY WITH AESTHETIC EXCELLENCE.  
 ORNELLAGALLODESIGN.COM

**THE HANOVER GALLERY**  
 ART ADVISORY AND MANAGEMENT  
 PROVIDING BESPOKE ART ADVISORY, ACQUISITION, AND INVESTMENT CONSULTANCY. THE EXPERT TEAM OFFERS PERSONALIZED SOLUTIONS FOR PRIVATE COLLECTORS AND INSTITUTIONS SEEKING TO ELEVATE THEIR SPACES THROUGH CURATED ART.

**CHANTICLEER STUDIO**  
 DESIGN AGENCY • CREATIVE DIRECTION • DIGITAL & CORPORATE DESIGN  
 SPECIALIZED IN CREATIVE DIRECTION, 3D RENDERINGS, DIGITAL DESIGN, AND CORPORATE IDENTITY. THE STUDIO ALSO DELIVERS HIGH-QUALITY PRINTING DESIGN, MARKETING STRATEGY, PR, AND SOCIAL MEDIA MANAGEMENT.

**VIDARTE STUDIO**  
 TEXTILE MANUFACTURING & LUXURY UPHOLSTERY  
 RENOWNED FOR HAND CRAFTED TEXTILES AND LUXURY BED LINENS. VIDARTE OFFERS A REFINED SELECTION OF BESPOKE LINENS AND UPHOLSTERY, MADE WITH THE UTMOST ATTENTION TO DETAIL, CRAFTSMANSHIP, AND DURABILITY



A woman in a dark jacket and trousers is walking from left to right in a minimalist gallery space. The walls are light grey, and the floor is a polished, reflective surface. On either side of a central pillar, there are large, dark, curved art pieces mounted on the wall. The pillar itself is covered in a large, abstract, textured artwork. The lighting is soft and even.

AS PART OF THE DI FORTUNA GROUP  
ORNELLA GALLO DI FORTUNA HAS TURNED EXCLUSIVE SPACES IN TO  
EXCEPTIONAL PIECES OF ART FROM HOMES TO YACHTS FOR  
HIGH PROFILE INDIVIDUALS AROUND THE WORLD

Or

ART & DESIGN

ORNELLA GALLO DI FORTUNA - ORNELLAGALLOART.COM - ORNELLAGALLODESIGN.COM - INFO@ORNELLAGALLO.COM  
51A YORK MANSIONS PRINCE OF WALES DRIVE SW114BP LONDON UNITED KINGDOM - +44 758179613



**COPYRIGHT NOTICE**

© ALL THE ARTWORKS AND TECHNIQUES ARE COPYRIGHTED AND BELONG TO ORNELLA GALLO DI FORTUNA THE ARTIST, DESIGNER AND CREATOR. ALL ORNELLA GALLO DI FORTUNA ARTWORKS ARE MADE BY HAND AND VARIATIONS CAN OCCUR IN SOME BESPOKE COMMISSIONED WORKS THE ARTWORKS YOU ARE BUYING OR MARKETING ARE EXCLUSIVE DESIGNS BELONGING TO ORNELLA GALLO DI FORTUNA.

PLEASE DO NOT SUBMIT DESIGN SHEETS FEATURING OUR PRODUCTS TO OTHER MANUFACTURING COMPANIES NOR TO OTHER PARTIES WHO MIGHT. ANY MANUFACTURER FOUND TO BE REPRODUCING ORNELLA GALLO DI FORTUNA ART, DESIGNS OR PRODUCTS WILL BE BREACHING COPYRIGHT LAW AND WILL BE ACTIVELY PURSUED.

